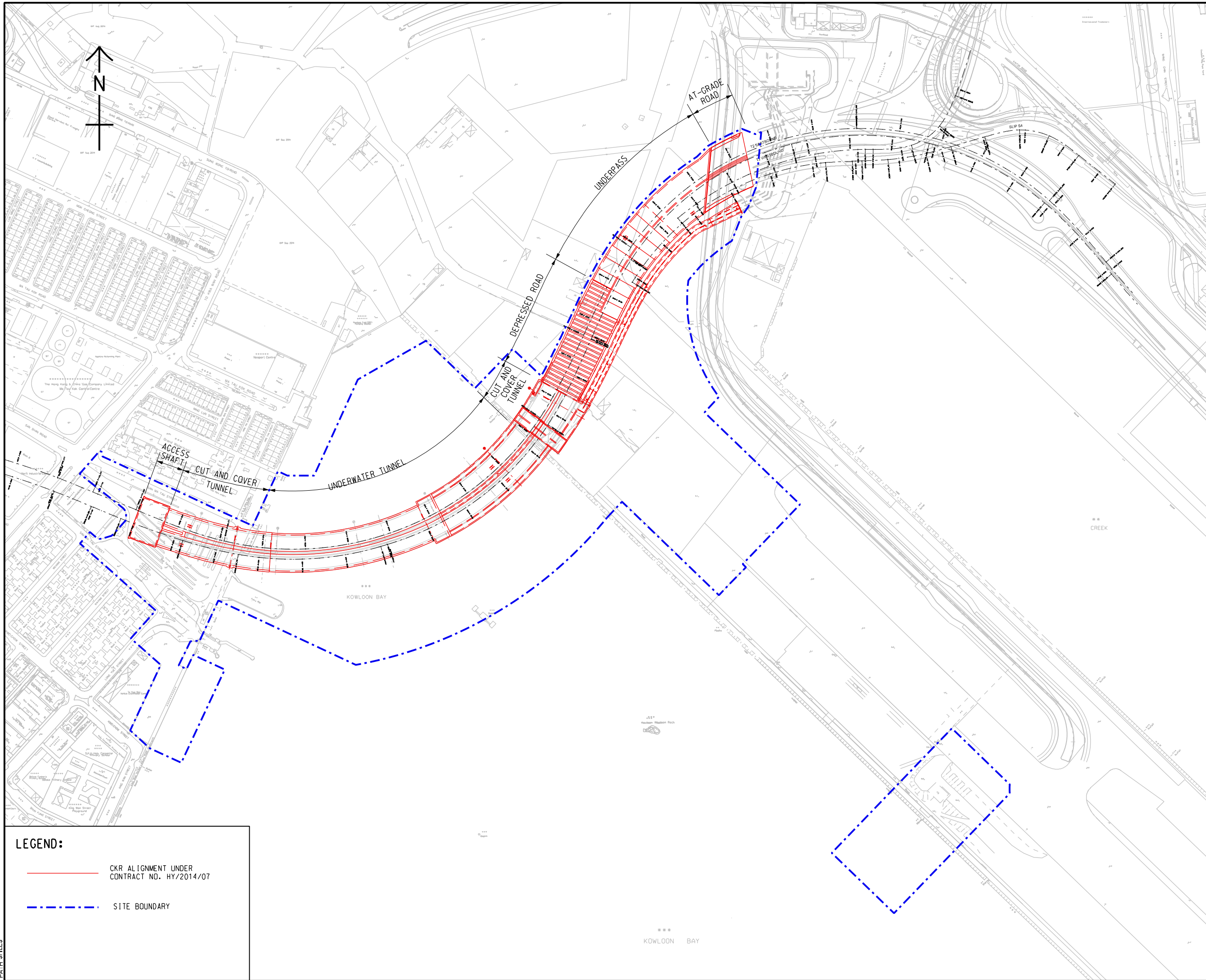


ISO A1 594mm x 841mm
 Project Management Initials: Designer: Checkist: Approver:
 PH: F10; SUSERS SDATES; PATH SPLES



LEGEND:

	CKR ALIGNMENT UNDER CONTRACT NO. HY/2014/07
	SITE BOUNDARY

AECOM

PROJECT
 CONTRACT NO.
 HY/2014/07
 CENTRAL KOWLOON
 ROUTE -
 KAI TAK WEST

CLIENT
 GAMMON CONSTRUCTION LIMITED

CONSULTANT
 AECOM Asia Company Ltd.
 www.aecom.com

SUB-CONSULTANTS

ISSUE/REVISION

IR	DATE	DESCRIPTION	CHK.

STATUS

SCALE: A3 1 : 4000
 DIMENSION UNIT: METRES

KEY PLAN



PROJECT NO. AGREEMENT NO.

SHEET TITLE
 SITE LAYOUT PLAN

SHEET NUMBER
 FIGURE 1.1

This drawing has been prepared for the use of AECOM's client. It may not be used, modified, reproduced or relied upon by third parties, except as agreed by AECOM or as required by law. AECOM accepts no responsibility, and does not warrant, for any part, that is used or relied upon without AECOM's express written consent. Do not scale this document. All measurements must be obtained from the stated dimensions.